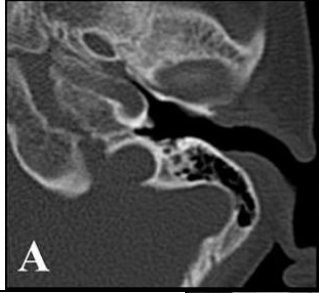


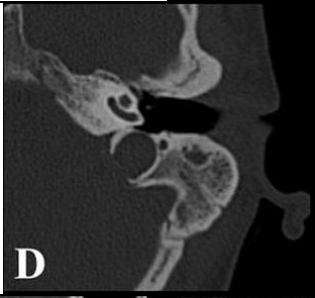
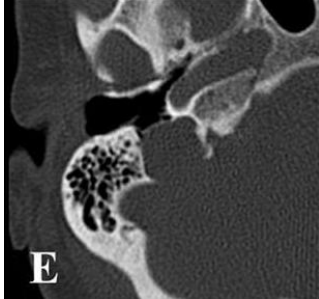
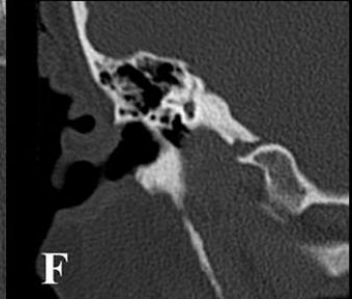


Notes About Jugular bulb

→ In axial scans from downwards to upwards

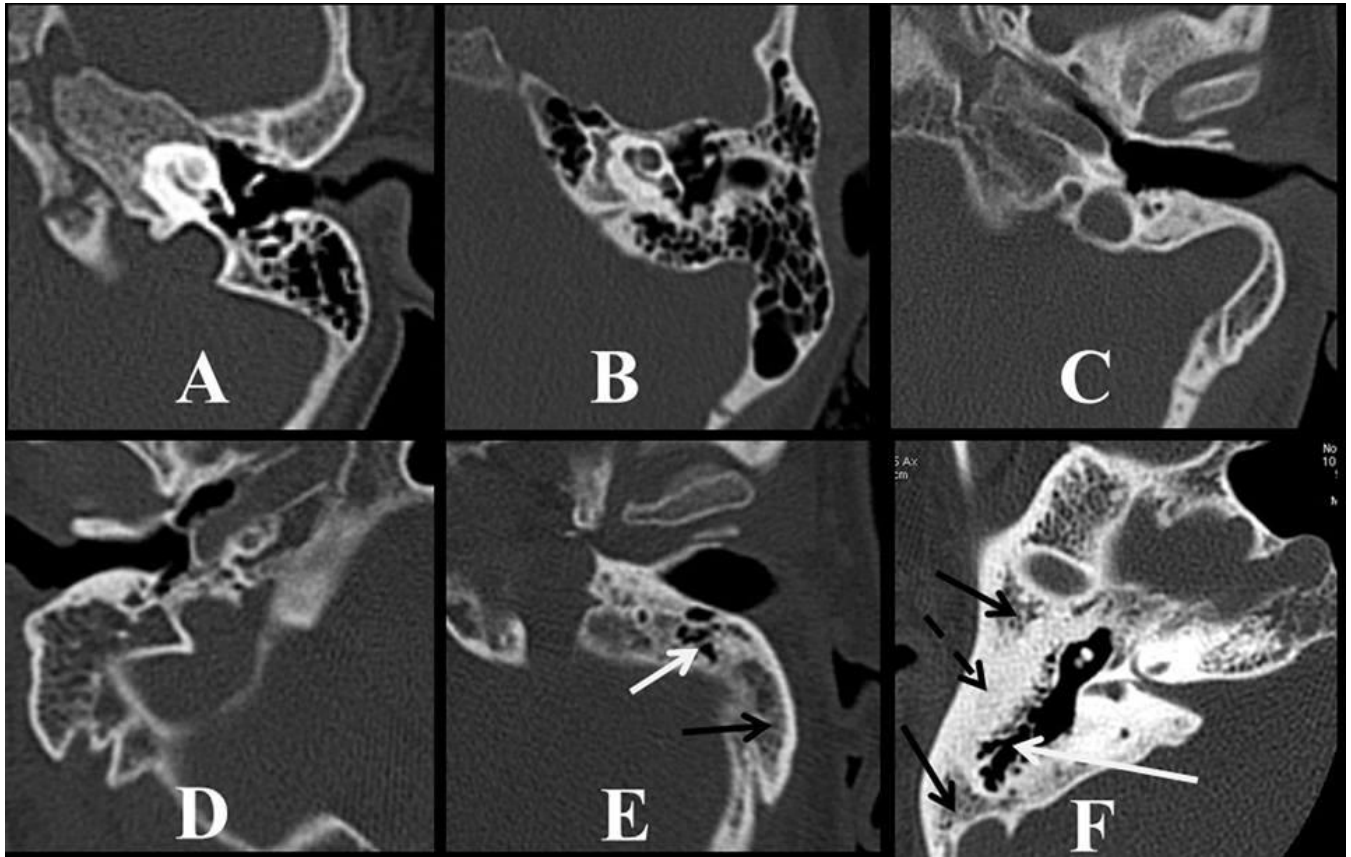
Normal Bulb	ends before reach level of basal turn of cochlea		
High Riding Bulb	bulb in same level of basal turn of cochlea		
Giant Bulb	width is 15 mm or more but do not reach basal turn of cochlea		
Gaint High Riding Bulb	15 mm or more + reach basal turn of cochlea		
Dehiscent bulb	absent bony septum separating the bulb from floor of middle ear cavity		

Destruction of bony margins of bulb without expansion → consider **Metastasis**

SUMMARY

Destruction of bony margins with expansion → consider **glomus jugulare**

Sclerosis of bulb bony margins without destruction → consider **Meningioma**



Different patterns of mastoid pneumatization. (A) Normal pneumatization.

(B) Hyperpneumatization.

(C) Hypoplastic diploic mastoid, note deep anterior position of sigmoid sinus.

(D) Diploic mastoid.

(E) Partially pneumatic (white arrow) partially diploic (black arrow) mastoid.

(F) Mixed, pneumatic (white arrow), diploic (black arrow) and sclerotic (dashed black arrow) mastoid.